

## Water System Description

The Alto Utilities Ltd. water system provides water for approximately 420 domestic unmetered connections, 1 school and 1 metered church (approximately 1000 people).

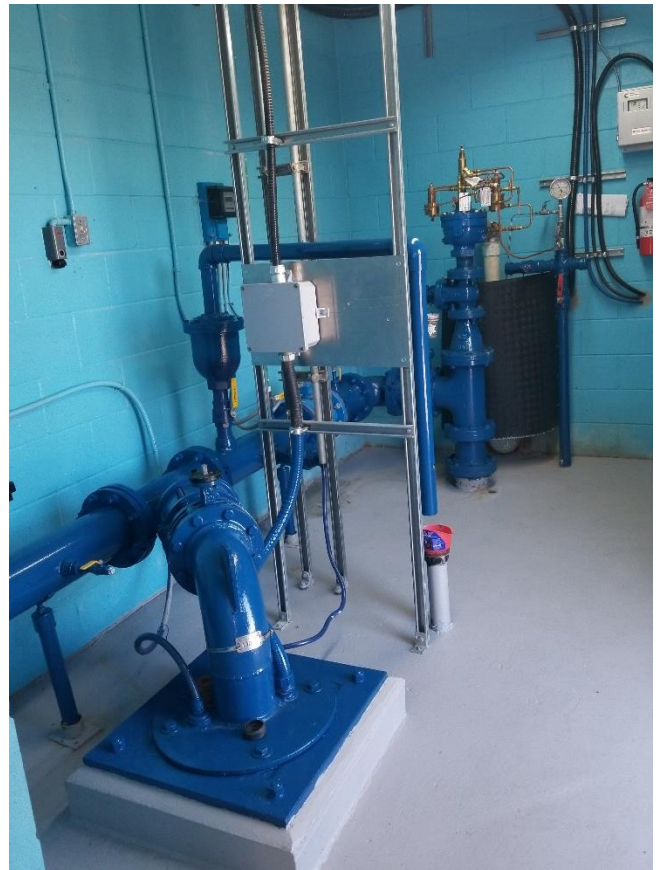
Untreated groundwater is drawn from two deep wells located on Lodge Road. These wells replenish three concrete reservoirs with a total capacity of over 1,700m<sup>3</sup>. The reservoirs are situated above the subdivision where gravity feeds the system through a series of mains, 32 fire hydrants, and two pressure reducing valve stations (PRVs).

Alto Utilities operates as required, and in accordance with the following programs:

- Capital Plan - no updates this year.
- Water Quality Monitoring Plan - monitoring continues as required.
- Emergency Response Plan - updated with current contact numbers. An electronic copy has been forwarded to the Interior Health Authority.
- Cross Connection Control Program - no changes this year.
- Environmental Operators Certification - Alto has negotiated a service contract to provide a Level II Operator, and continues to maintain a Level I Operator on staff, as well as a Level 1 Operator In Training.



*Lodge Road Pump House*



*Inside the Lodge Road Pump House*

Alto Utilities Ltd. is a privately-owned, public regulated water utility.

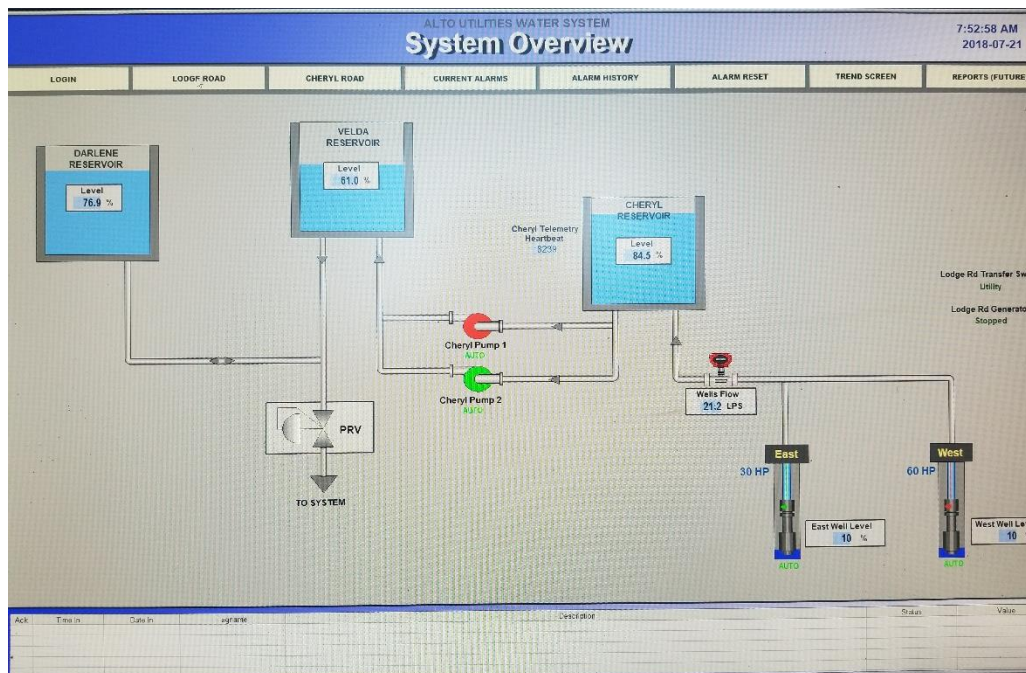
## System Improvements & Maintenance

The distribution system was originally constructed in 1970, and has seen various upgrades over the years. This year, a new radio telemetry monitoring and control system was installed from the Lodge Road pump house to the Cheryl Road booster station, at a cost of \$48,000. This system allows Alto Utilities to remotely monitor the operation of, and collect data from, the distribution system. A new pump was also installed in the East well at Lodge Road.

Alto Utilities performs annual inspections of all hydrants on the system, and reports findings to the local fire department.

The entire system is flushed semi-annually in April and October to ensure piping is refreshed and minor sediment within the pipes is removed. Monthly flushing is also performed on all ends of the system.

Billing is also being streamlined with the introduction of an electronic billing system. Bills are issued semi-annually in April and October.



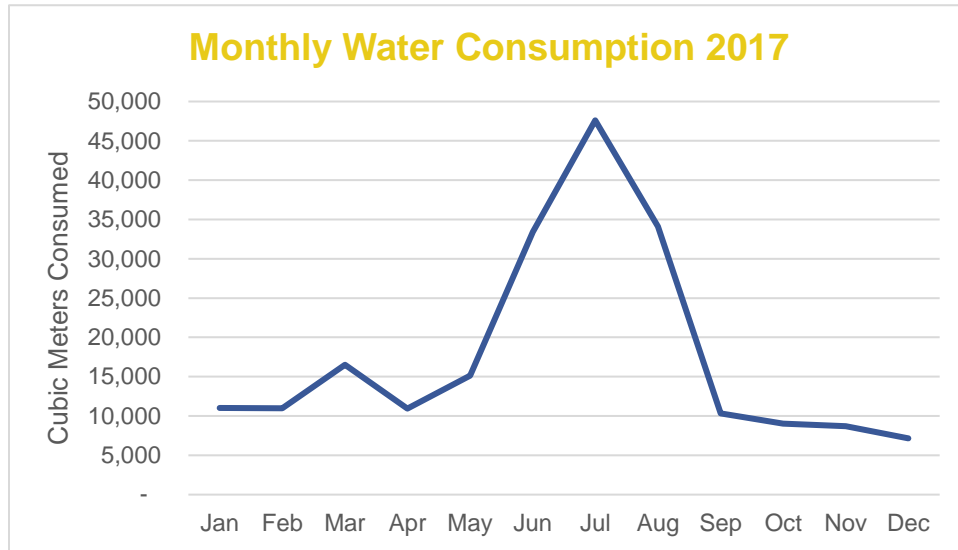
*Radio Telemetry System Overview*

## Upcoming Improvements

Plans to upgrade the Darlene Road PRV are in development.

## Water Consumption

Annual consumption was 262,489 cubic meters.



## Water Sampling & Quality Monitoring

Samples are collected once per month from five locations, and are tested by an accredited laboratory. Alto Utilities submits monthly reports to Interior Health. In 45 years, Alto Utilities has never had to issue a Boil Water Advisory.

### Sample Locations

- Woodsdale Road Test Station
- Darlene Road Test Station
- Velda Road Test Station
- Peter Greer Elementary
- Main Pump House, Lodge Road

In addition, a complete chemical analysis of each well source is completed by an accredited laboratory every three years, the last one was completed in 2016.